

**CORAIL<sup>®</sup>**  
HIP SYSTEM

# CORAIL<sup>®</sup> PEARL

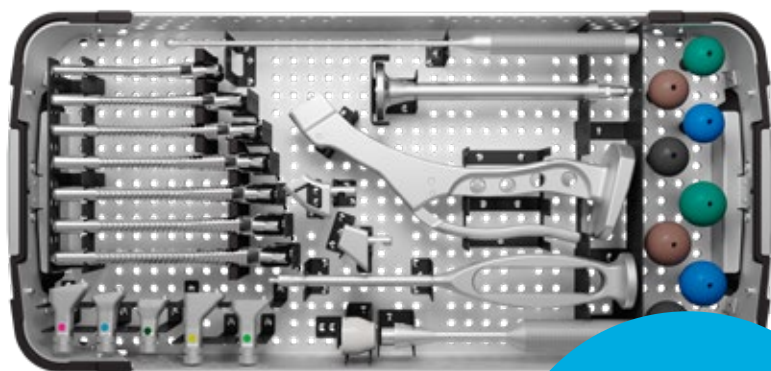
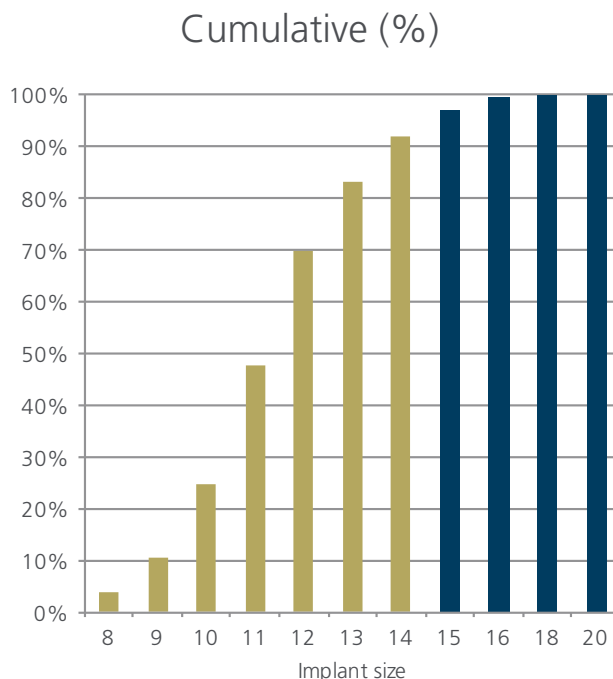
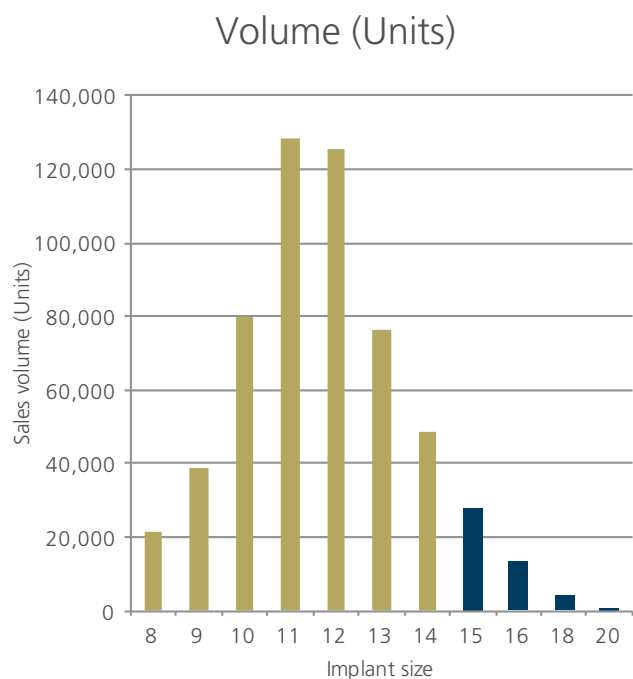
Product Rationale



# CORAIL® Cementless

The CORAIL Pearl Instrument Trays have been developed to streamline the number of instruments required in the OR for a standard CORAIL procedure. The Instruments have been separated into two single layer trays with the instruments required to implant a CORIAL Stem upto a size 14 included in the Core tray and the additional instruments required to implant sizes 15-20 in an Expansion tray. The expansion tray also provisions for distal reaming.

## Sales by size (2012-14)<sup>1</sup>

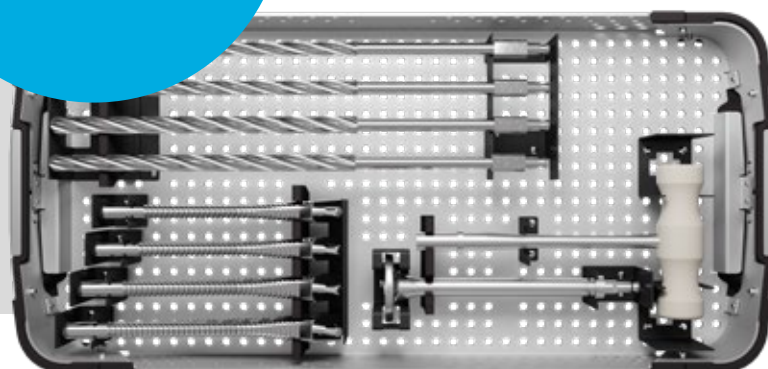


92% of cases can be done with the Core Kit

(include's broaches 8 to 14)<sup>1</sup>

**3:1**  
proposed ratio

Remaining cases can be done with the Expansion Kit



# CORAIL PEARL Provision for Distal Reaming

## Dorr Type A – The Champagne Flute

In Dorr Type A ('champagne flute') femurs (Figure 1) proper metaphyseal fit may require a larger size than the femoral canal can accommodate distally. In these cases consideration should be given to distal reaming to enlarge the canal to accommodate a broach of the appropriate size.

The CORAIL Pearl Expansion Tray accommodates straight rigid reamers of progressive diameter from 9-12mm. Ream to sufficient depth to ensure distal clearance with the stem. The reamers have an engraved line on the cutting surface, if this is aligned with the planned center of rotation of the head this will provide distal clearance for up to a size 13 stem.<sup>2</sup>

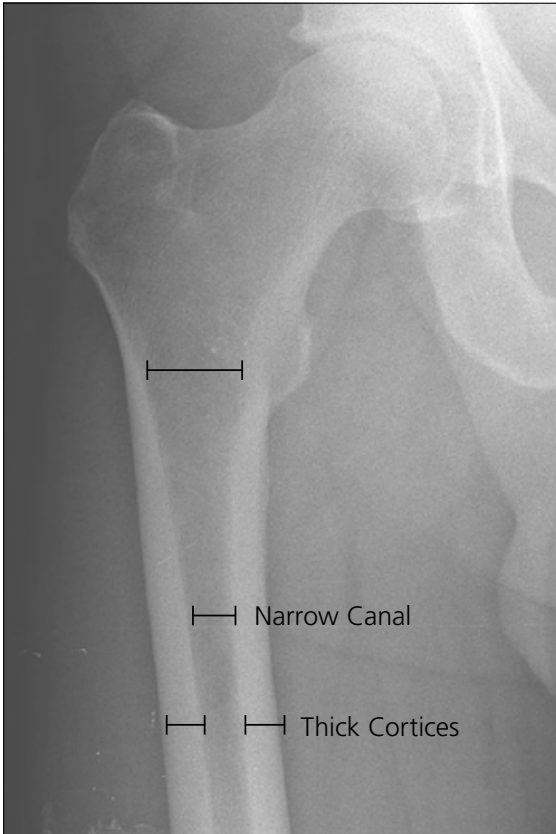
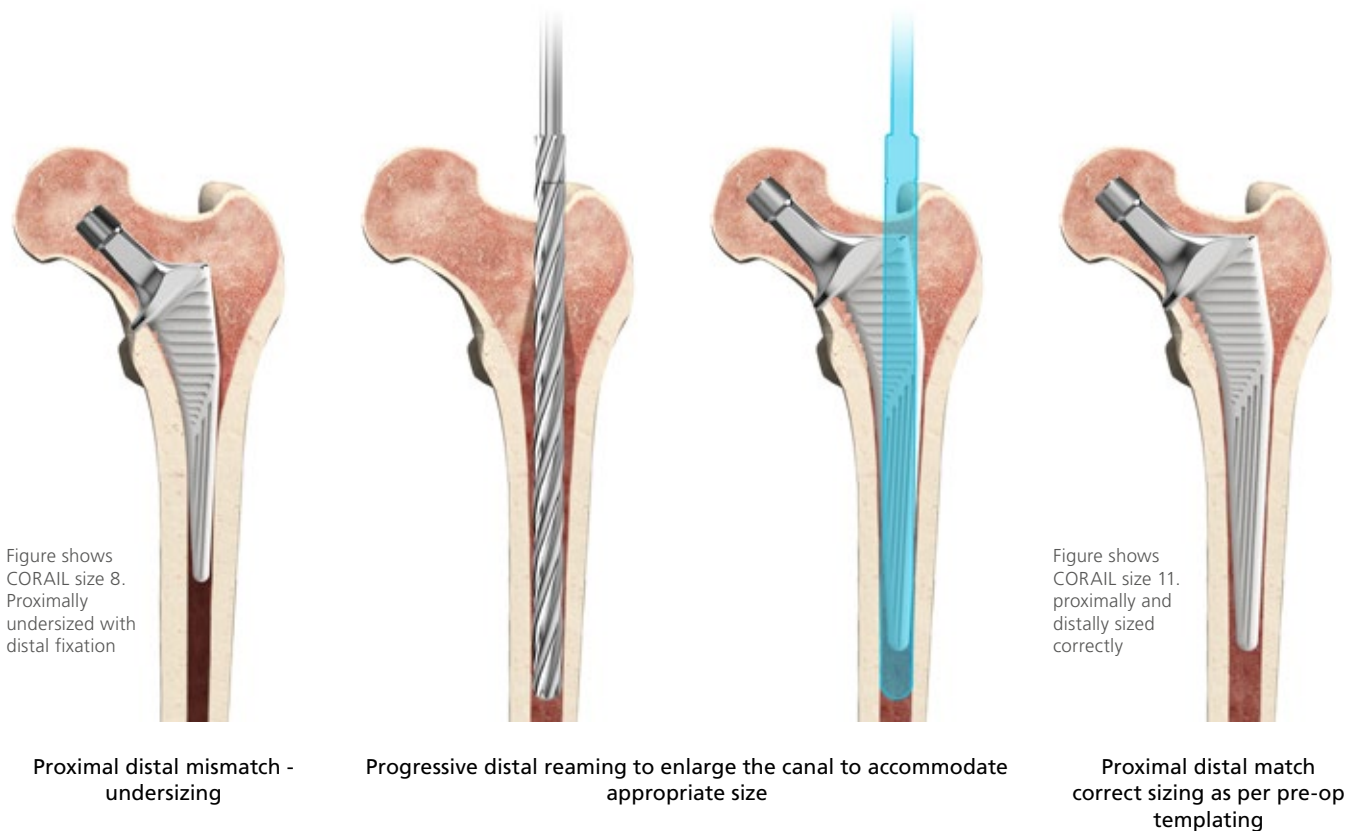


Figure 1. Example of a DORR Type A Femur.



# Ordering Information

## Core Tray

2001-65-000	Femoral/Humeral Head Impactor
2530-81-000	ARTICUL/EZE™ Trial Head Grooved 28 mm +1.5
2530-82-000	ARTICUL/EZE Trial Head Grooved 28 mm +5
2530-83-000	ARTICUL/EZE Trial Head Grooved 28 mm +8.5
2530-84-000	ARTICUL/EZE Trial Head Grooved 28 mm +12
2530-91-000	ARTICUL/EZE Trial Head Grooved 32 mm +1
2530-92-000	ARTICUL/EZE Trial Head Grooved 32 mm +5
2530-93-000	ARTICUL/EZE Trial Head Grooved 32 mm +9
2530-94-000	ARTICUL/EZE Trial Head Grooved 32 mm +13
2545-01-700	DePuy Synthes Lid
2570-05-100	SUMMIT™ Standard Imp. Inserter
2598-07-530	Modular Osteotome
9400-80-007	Proxima Calcar Planer
9522-12-500F	CORAIL AMT Extra Curved Handle
L20408	Broach CORAIL AMT 8
L20409	Broach CORAIL AMT 9
L20410	Broach CORAIL AMT 10
L20411	Broach CORAIL AMT 11
L20412	Broach CORAIL AMT 12
L20413	Broach CORAIL AMT 13
L20414	Broach CORAIL AMT 14
L94003	Neck Trial 125 STD
L94004	Neck Trial 125 HO
L94005	Neck Trial 135 STD
L94006	Neck Trial 135 HO
L94007	Neck Trial 135 SN
L94013	Modular Bone Compactor
L94018	Canal Explorer
L95057	CORAIL Femoral Tray Sizes 8-14

## Expansion Tray

L20415	Broach CORAIL AMT 15
L20416	Broach CORAIL AMT 16
L20418	Broach CORAIL AMT 18
L20420	Broach CORAIL AMT 20
L94010	Large Shielded Calcar Planer
2001-42-000	T Handle
2105-11-000	Canal Reamer 9.0
2105-12-000	Canal Reamer 10.0
2105-14-000	Canal Reamer 11.0
2105-15-000	Canal Reamer 12.0
L95058	CORAIL Expansion Tray Sizes 15-20
2545-01-700	DePuy Synthes Lid

For full CORAIL AMT Surgical Technique and product codes please refer to "CORAIL Upgrade Surgical Technique" DSEM/JRC/0115/0236(1).

## References

- 2012 - 2014 CORAIL Hip System sales, data on file, DePuy International Ltd.
- DePuy Synthes Data on File Ref 103356859

The third party trademarks used herein are the trademarks of their respective owners.

This publication is not intended for distribution in the USA.



Legal Manufacturer	Implants
DePuy (Ireland)	Tiges et Instruments CORAIL de Révision
DePuy Orthopaedics, Inc	Têtes fémorales ARTICUL/EZE

Johnson & Johnson Medical Limited PO BOX 1988, Simpson Parkway, Livingston, West Lothian, EH54 0AB, United Kingdom. Incorporated and registered in Scotland under company number SC132162.

**DePuy Orthopaedics, Inc.**  
700 Orthopaedic Drive  
Warsaw, IN 46582  
USA  
Tel: +1 (800) 366 8143  
Fax: +1 (800) 669 2530

**DePuy International Ltd**  
St Anthony's Road  
Leeds LS11 8DT  
England  
Tel: +44 (0)113 270 0461

**DePuy (Ireland)**  
Loughbeg  
Ringaskiddy  
Co. Cork  
Ireland  
Tel: +353 21 4914 000  
Fax: +353 21 4914 199



[depuyorthopaedics.com](http://depuyorthopaedics.com)

© DePuy Synthes 2020. All Rights Reserved.

116495-191223 DSEM